

17 Rebecca Drive

Birmingham, B29 6TP

£90 per person per week. Newly refurbished 3 bed accommodation, all double good sized bedrooms, fully furnished, C/H D/G, large kitchen plenty of storage. Bathroom with shower over the bath, big clean garden, private car park at the back, great location, just opposite Sainsbury's, short walk to university.

£270 Per Week

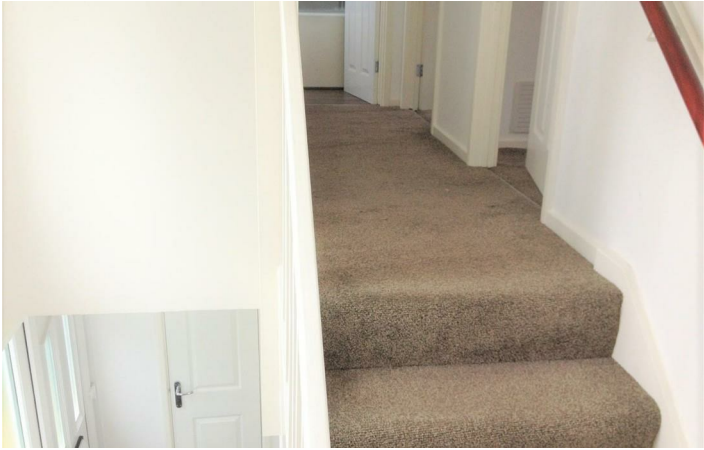
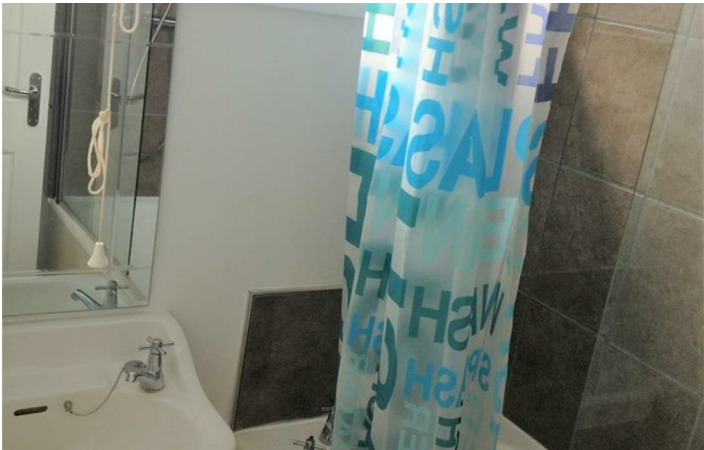
17 Rebecca Drive

Birmingham, B29 6TP



£90 per person per week. Newly refurbished 3 bed accommodation, all double good sized bedrooms, fully furnished, C/H D/G, large kitchen plenty of storage. Bathroom with shower over the bath, big clean garden, private car park at the back, great location, just opposite Sainsbury`s, short walk to university.

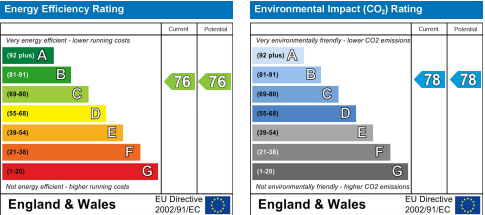
[Directions](#)





Floor Plan

These particulars, whilst believed to be accurate are set out as a general outline only for guidance and do not constitute any part of an offer or contract. Intending purchasers should not rely on them as statements of representation of fact, but must satisfy themselves by inspection or otherwise as to their accuracy. No person in this firms employment has the authority to make or give any representation or warranty in respect of the property.



543 Bristol Road, Selly Oak, Birmingham B29 6AU. T: 0121 472 3331 Website: www.direct-housing.co.uk
E-mail: sellyoak@direct-housing.co.uk lettings@direct-housing.co.uk accounts@direct-housing.co.uk

